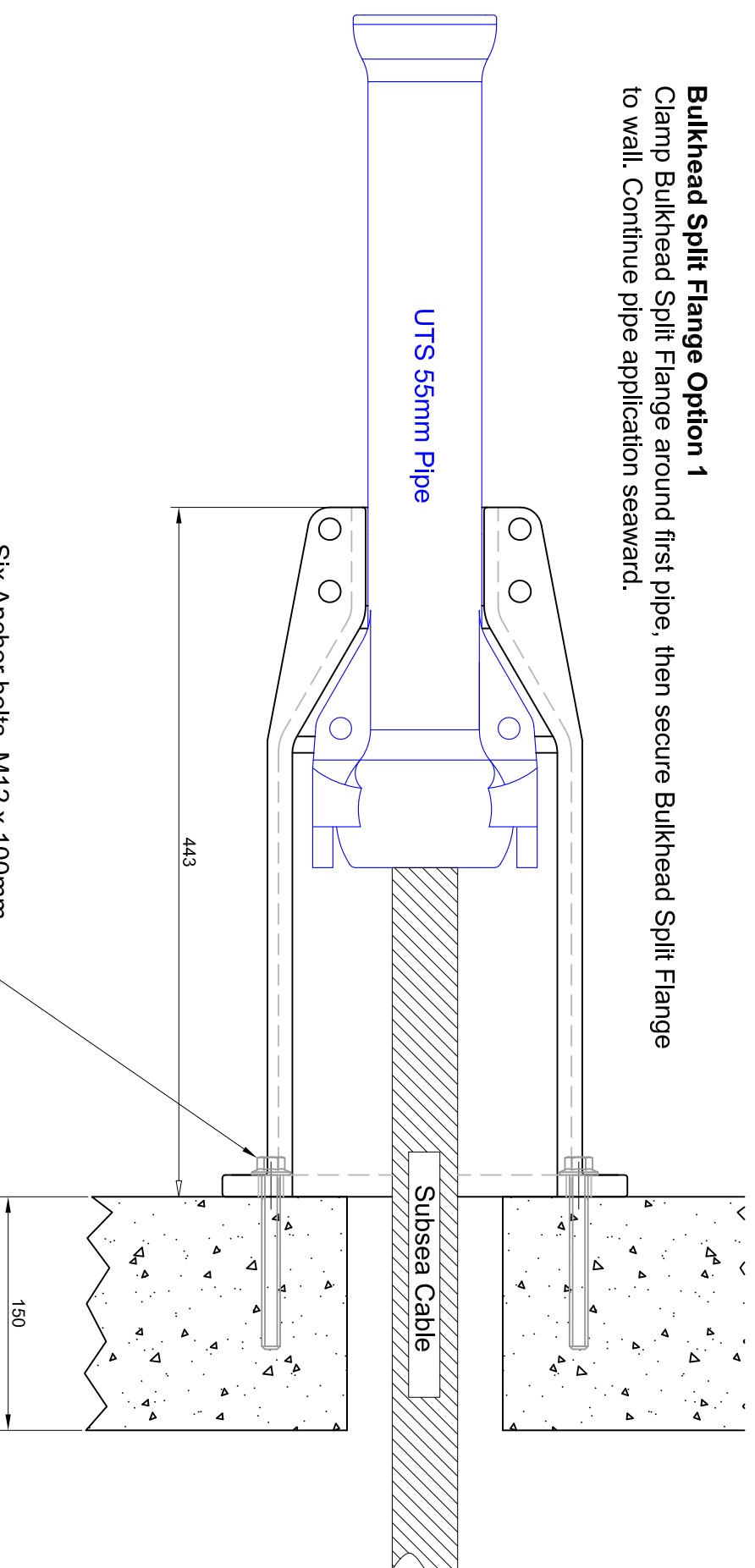
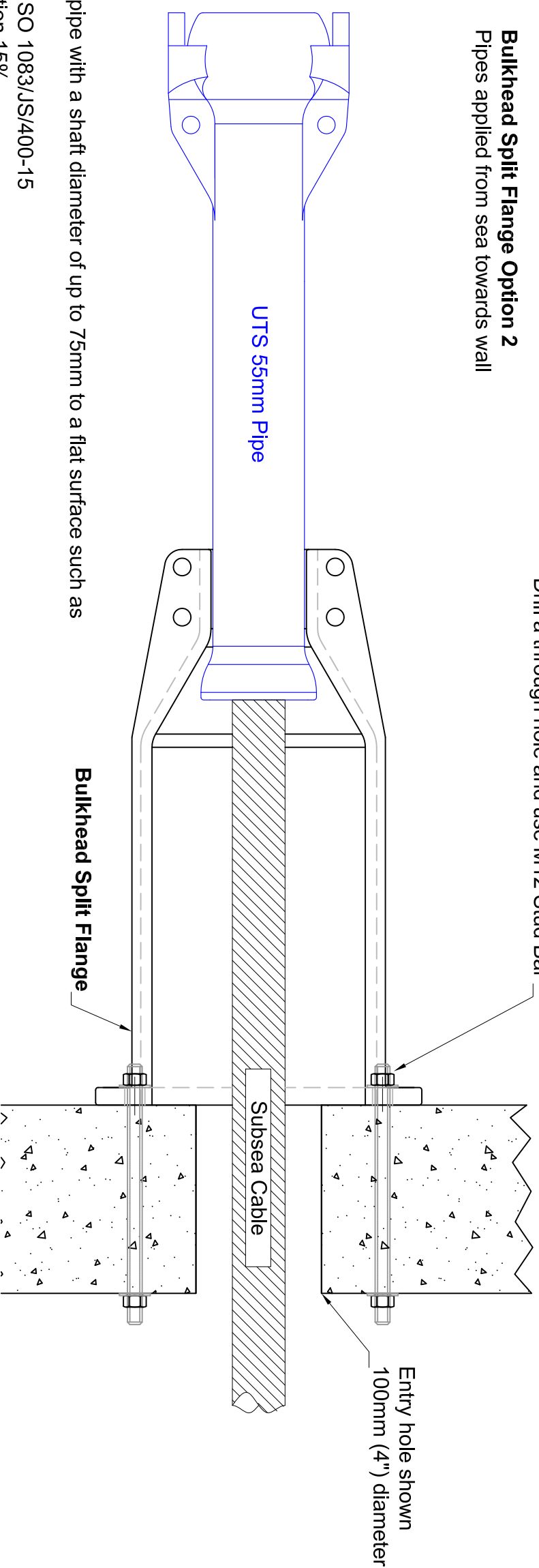


Bulkhead Split Flange Option 1
Clamp Bulkhead Split Flange around first pipe, then secure Bulkhead Split Flange to wall. Continue pipe application seaward.



Six Anchor bolts M12 x 100mm
OR
Drill a through hole and use M12 Stud Bar

Bulkhead Split Flange Option 2
Pipes applied from sea towards wall



Notes

- Bulkhead Split Flange for terminating any pipe with a shaft diameter of up to 75mm to a flat surface such as a Beach Manhole (BMH)
- Material Spheroidal Graphite Cast Iron to ISO 1083/JS/400-15
- Material Tensile strength 400MPa, Elongation 15%
- Material wall thickness 9mm (+1 / -0.5mm)
- General tolerances in accordance with ISO 8062-CT8
- Requires bolting together with four A4 (316 grade) Stainless Steel M12 x 50mm bolts with washers and nuts
- Secure Bulkhead Split Flange to concrete wall with 6 x M12 concrete fixings
- Weight of one Casting in air 9.5 Kg (19 kg for one pair)
- All dimensions in mm



UTS Cable Limited

17-19 St. Georges Street, Norwich, NR3 1AB United Kingdom
Tel: +44 1603 516242 Email: pipe@utscable.com www.utscable.com

Date: 01-09-20

Scale: NTS

Sheet Size A3

Code: 986-999-319-002

Issue: 3

Title: Bulkhead Split Flange

Application: Wall Termination GA