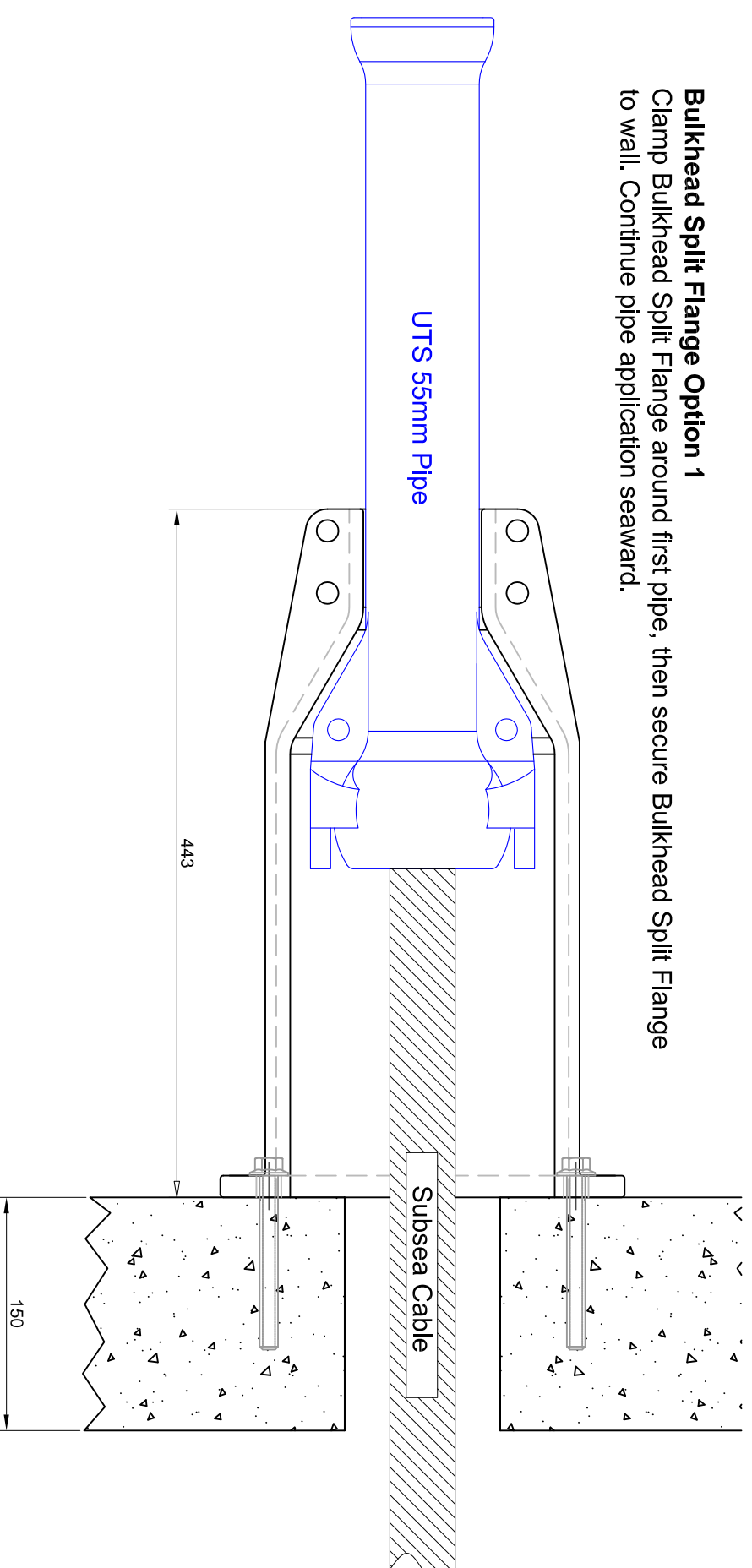
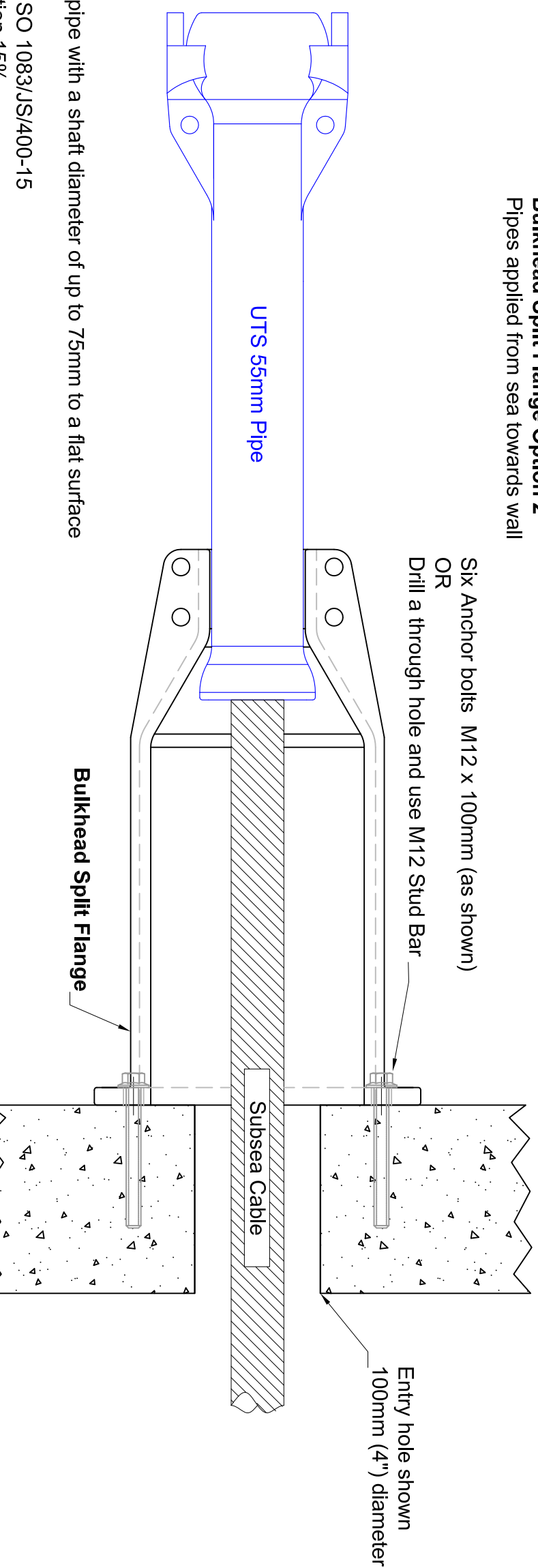


**Bulkhead Split Flange Option 1**  
Clamp Bulkhead Split Flange around first pipe, then secure Bulkhead Split Flange to wall. Continue pipe application seaward.



**Bulkhead Split Flange Option 2**  
Pipes applied from sea towards wall



**Notes**

- Bulkhead Split Flange for terminating any pipe with a shaft diameter of up to 75mm to a flat surface such as a Beach Manhole (BMH)
- Material Spheroidal Graphite Cast Iron to ISO 1083/JS/400-15
- Material Tensile strength 400MPa, Elongation 15%
- Material wall thickness 9mm (+1 / -0.5mm)
- General tolerances in accordance with ISO 8062-CT8
- Requires bolting together with four A4 (316 grade) Stainless Steel M12 fixings comprising Hexagon Head Set Screw 50mm long; Form A Flat Washer; Split / Spring washer and Full Nut
- Secure Bulkhead Split Flange to concrete wall with 6 x M12 concrete fixings
- Weight of one Casting in air 9.5 Kg (19 kg for one pair)
- All dimensions in mm

		<b>UTS Cable Limited</b>	
		Cedar House, 105 Carrow Road, Norwich, NR1 1HP United Kingdom Tel: 00 44 1603 516242 Fax: 00 44 1603 516247 Email: <a href="mailto:pipe@utscable.com">pipe@utscable.com</a>	
Date: 12-03-14	Scale: NTS	Sheet Size A3	
Code: 986-999-319-002	Title: Bulkhead Split Flange		Issue: 2
Application: Wall Termination GA			